

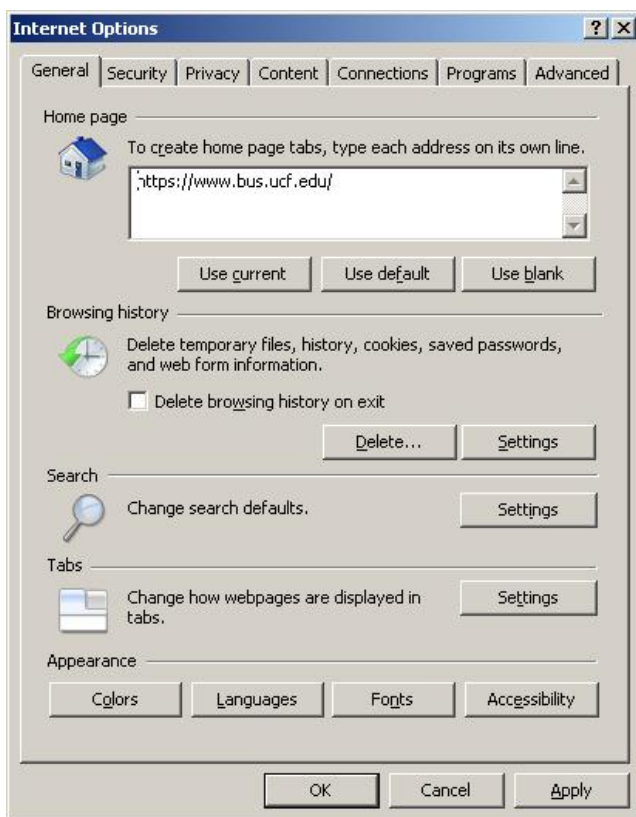
Web courses Internet Explorer 8 Issues with video page load

- 1) Verify that you are running IE8
 - a. In the top menu bar, select “Help” then select “About Internet Explorer”



Click OK

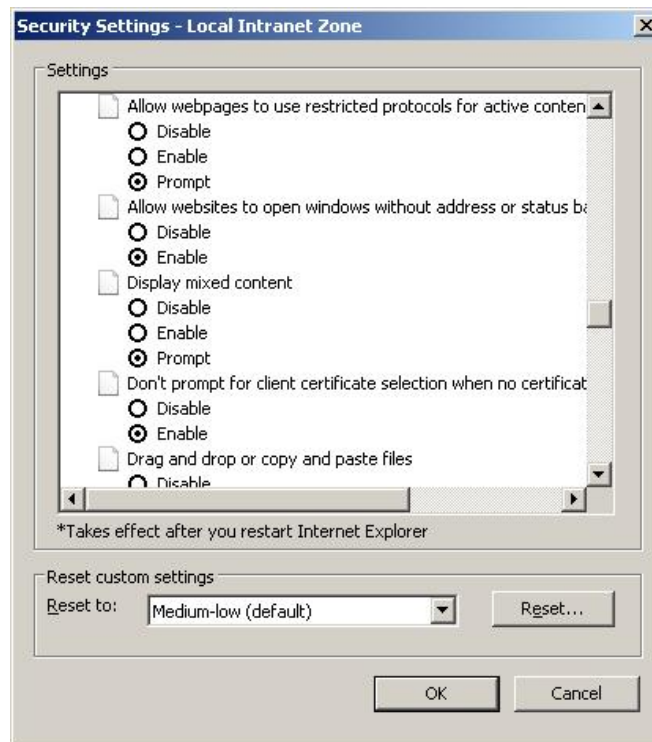
- 2) In the top menu bar, select “Tools” then “Internet Options”



- a) Select the “Security” Tab, then Select the “Custom level” button

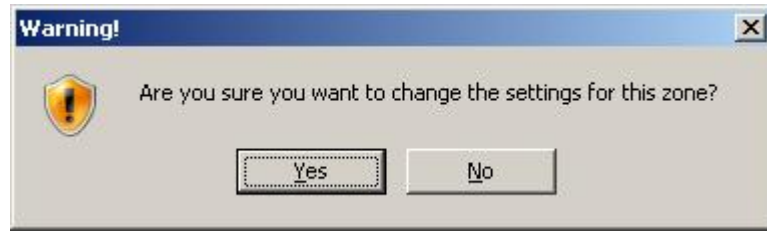


- b) Scroll approximately half way down the list until you reach “Display mixed content” This setting needs to be set to “Enable” for Webcourses to work properly.



- c) Click “Enable”, select “OK”

3) Select "Yes" to the warning that pops up.



a) Click "Apply", click "OK" restart Internet Explorer 8 and log back into Webcourses.

This should correct most problems associated with Internet Explorer 8.